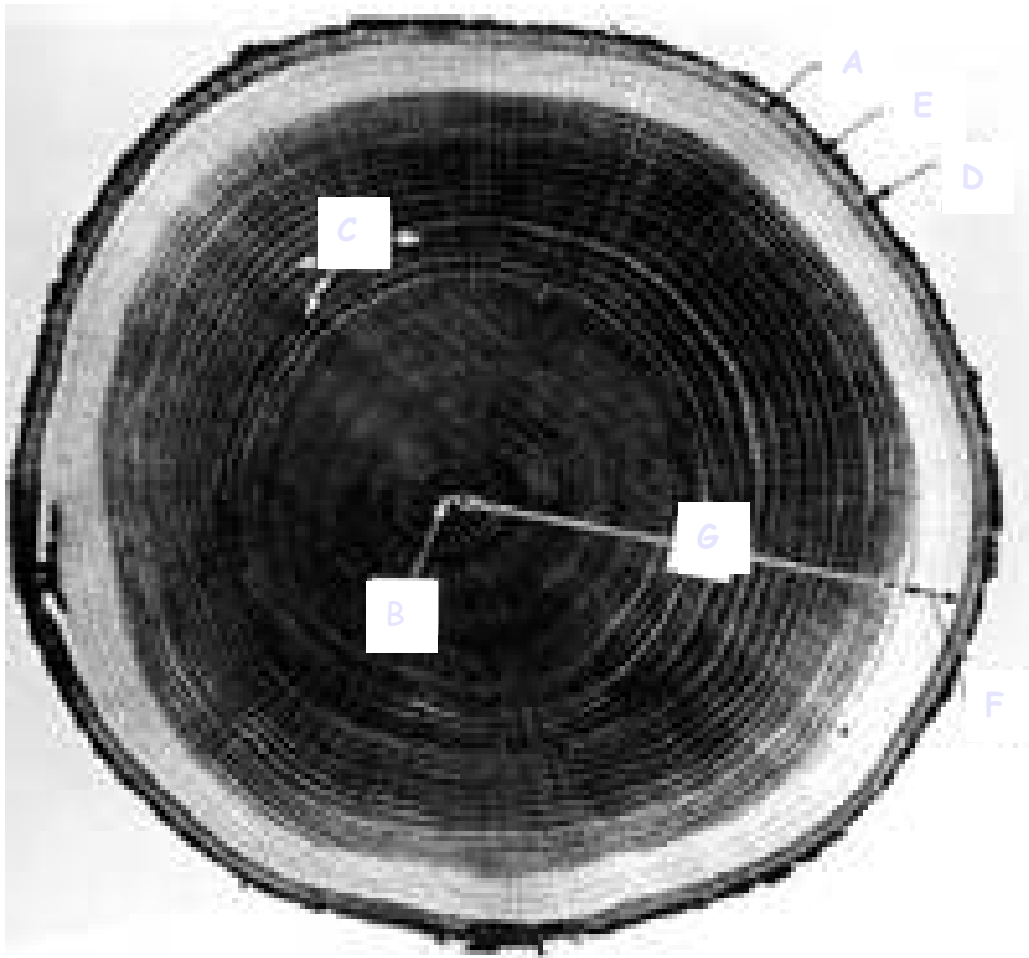


 he Tree Cookie

Label all of the following parts of the cookie using the following word bank:
outer bark (dry dead tissue), inner bark (living tissue), cambium, sapwood, heartwood, pith, and wood rays.



- A. _____
- B. _____
- C. _____
- D. _____
- E. _____
- F. _____
- G. _____

Adapted from: http://extension.usu.edu/forestry/UtahForests/Trees_WhatIsATree.htm
Image from [Wood Handbook - U.S. Forest Service General Technical Report FPL-GTR-113](http://www.fpl.fs.fed.us/documnts/fplgtr/fplgtr113/fplgtr113.htm) <<http://www.fpl.fs.fed.us/documnts/fplgtr/fplgtr113/fplgtr113.htm>>